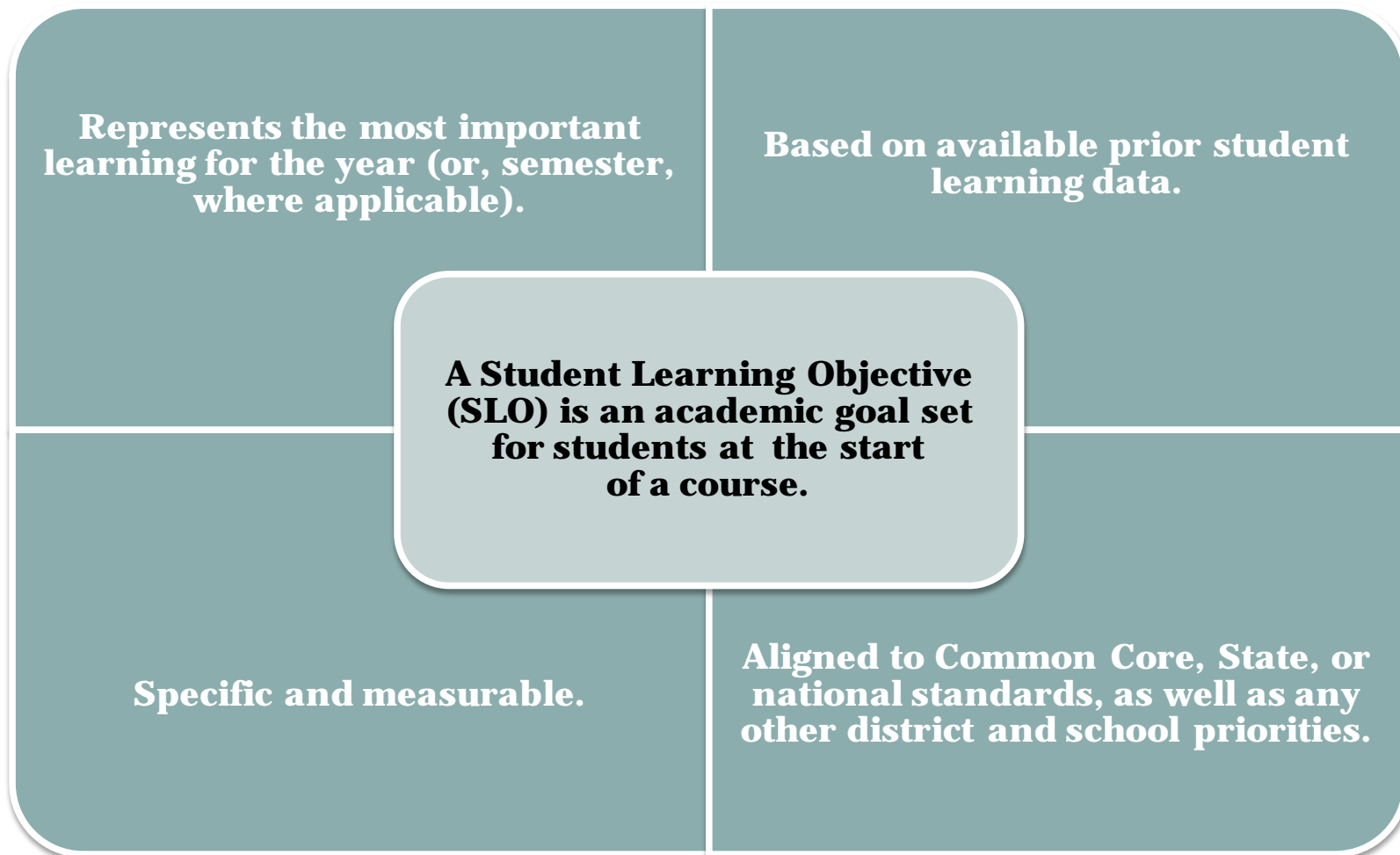


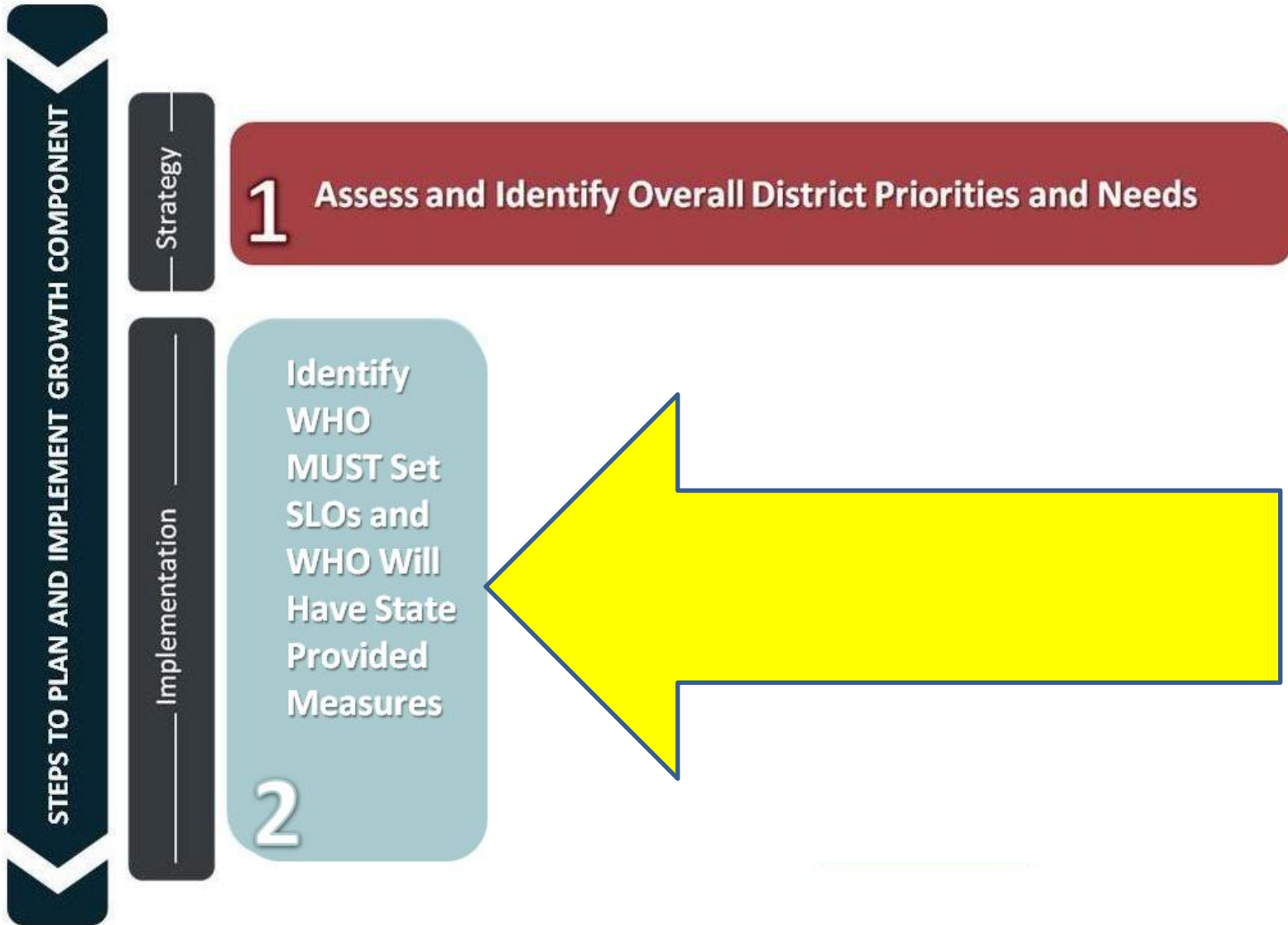
Student Learning Objectives (SLO)

February 2012

What Are Student Learning Objectives (SLOs)?



What Does the District Determine?



5 District Decisions by 5/30/2012

1. Assess and identify priorities and academic needs.
 2. Identify who will have State-provided growth measures and who must have SLOs as “comparable growth measures.”
 3. Determine District rules for how specific SLOs will get set.
 4. Establish expectations for scoring SLOs and for determining teacher ratings for the growth component.
 5. Determine District-wide processes for setting, reviewing, and assessing SLOs in schools.
-
- 3/01
- 4/16
- 5/30

Step 1: Determine District-wide Priorities and Academic Needs

- ❑ Assess and identify District-wide priorities and academic needs. Start with commitments and focus areas in District strategic plans.
- ❑ Decide how prescriptive the District will be and where decisions will be made by principals, or principals with teachers.

THREE TYPES OF TEACHERS

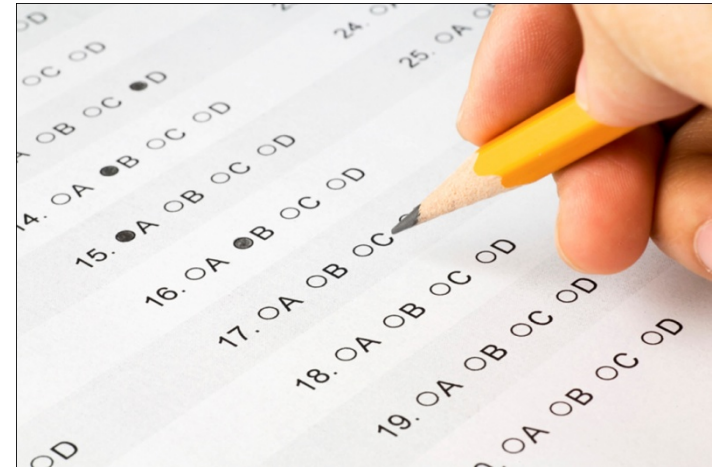
- Teacher 1: Those who have a State provided growth measure and are *not* required to have an SLO.
- Teacher 2: Those who have a State provided growth measure, and yet, *are* required to have an SLO *because* less than 50% of their students are covered by the State provided growth measure.
- Teacher 3: Those who are required to have an SLO and do *not* have a State provided growth measure.

Teachers by Grade and Subject:	Growth is State-provided SGP/VA	Growth is SLO
K-2 Teachers	<i>Future Possibly</i>	<ul style="list-style-type: none"> - 1 SLO for ELA (literacy and writing) - 1 SLO for Math - (unless teacher focuses on single subject area)
3 Teachers	<i>Future Possibly</i>	<ul style="list-style-type: none"> - 1 SLO for ELA (literacy and writing) - 1 SLO for Math - (unless teacher focuses on single subject area) - (must use State assessment as evidence)
4-8 Common Branch/ ELA/Math Teachers	YES	N/A
4-8 Science and Social Studies Subject Teachers	<i>Future Likely</i>	<ul style="list-style-type: none"> - 1 SLO for each subject/assessment – (SLOs must cover classes with largest numbers of students until a majority of students are covered)
4-8 Other Subject Teachers	NO	<ul style="list-style-type: none"> - <i>Grades 6-7 Science and 6-8 Social Studies must use a State-approved 3rd party assessment as evidence; Grade 4 and Grade 8 Science must use a State assessment as evidence.</i>
9-12 Core Subjects, Regents Subjects and Regents Equivalents	As available	<ul style="list-style-type: none"> • 1 SLO for each subject/assessment - (SLOs must cover classes with largest numbers of students until a majority of students are covered) - Core Subjects: High school ELA, Math, Science and Social Studies courses associated in 2010-11 with Regents or, in the future, with other State assessments must use a State assessment as evidence if one exists (or Regents equivalents). If not, SLO must use assessment from list of State-approved 3rd party assessments and Regents equivalents.
9-12 Other Subject Teachers		<ul style="list-style-type: none"> • 1 SLO for each subject/assessment - (SLOs must cover classes with largest numbers of students until a majority of students are covered)
Teachers with a Mix of Sections/Courses With/ Without State-Provided Growth Measures	Yes if $\geq 50\%$ of sections/students are covered by SGP/VA	<ul style="list-style-type: none"> • If $< 50\%$ covered by SGP/VA, then SLOs will be used. - First, SLOs must use SGP/VA where available; then create SLOs for largest sections without SGP/VA until majority of students are covered.

GRADE/ SUBJECT	ELA and Math
K - 2	<p>1 SLO for ELA and 1 SLO for Math with one of the following assessment options:</p> <ul style="list-style-type: none"> • State approved 3rd party • District or BOCES – developed • School-wide, group, or team results based on state assessments • School or teacher-created
Other Subjects	<p>SLO with one of the following assessment options:</p> <ul style="list-style-type: none"> • State approved 3rd party • District or BOCES – developed • School-wide, group, or team results based on State assessment • School or teacher-created
Physical Education	
Foreign Language	
Music	
Art	
FACS	
Technology	
Business	
Health	
Computer	
OTHER	

State approved 3rd party for use with growth subcomponent

- Assessment Center/ip Growth
- Acuity
- Terra Nova
- i-Ready Diagnostic Assessment
- Measures of Academic Progress
- Performance Based Task Assessment
- STAR Early Literacy Enterprise
- STAR MATH Enterprise
- STAR Reading Enterprise
- The Iowa Tests
- Performance Series



Sample Teacher SLO Data Spreadsheet

All the principal needs is the aggregate to determine whether or not the target was met.

Target: 80% of students will demonstrate mastery of LOTE standards for Spanish 3 as evidenced by a score of 75 or higher on the final assessment		HISTORICAL DATA		BASELINE ASSESSMENT	FINAL ASSESSMENT	TARGET
CLASS AVERAGE		AVG: 86	AVG: 83	AVG: 60	AVG: 85	AVG: 90%
Student Name	Class Period	Spanish 1 Final Scores	Spanish 2 Final Scores	Spanish 3 Baseline Assessment	Spanish 3 Final Assessment	Met Target (YES/NO)
Student 1	Spanish 3	70	73	44	80	Yes
Student 2	Spanish 3	91	85	65	91	Yes
Student 3	Spanish 3	91	95	68	86	Yes
Student 4	Spanish 3	94	85	69	86	Yes
Student 5	Spanish 3	75	78	45	75	Yes
Student 6	Spanish 3	72	74	51	68	No
Student 7	Spanish 3	89	93	56	94	Yes
Student 8	Spanish 3	81	80	62	90	Yes
Student 9	Spanish 3	100	98	68	98	Yes
Student 10	Spanish 3	97	73	63	80	Yes

Mapping District Decisions for Assessments

DISTRICT DECISIONS FOR ASSESSMENTS TO BE USED AS EVIDENCE OF STUDENT LEARNING FOR STATE GROWTH (20%)

		ELA/MATH/COMMON BRANCH TEACHERS			TEACHERS OF OTHER SUBJECT AREA *SLO for each subject/assessment (SLOs must cover classes with largest numbers of students until a majority of students are covered)	
GRADE/ SUBJECT		ELA		MATH	SOCIAL STUDIES	SCIENCE
2	NYSED Regulations	1 SLO for ELA with one of the following assessment options: • State approved 3rd party** • District or BOCES – developed • School-wide, group, or team results based on State assessment • School or teacher-created	AND	1 SLO for MATH with one of the following assessment options: • State approved 3rd party** • District or BOCES – developed • School-wide, group, or team results based on State assessment • School or teacher-created	SLO with one of the following assessment options: • State approved 3rd party** • District or BOCES – developed • School-wide, group, or team results based on State assessment • School or teacher-created	SLO with one of the following assessment options: • State approved 3rd party** • District or BOCES – developed • School-wide, group, or team results based on State assessment • School or teacher-created
2	District Decision		AND			
3	NYSED Regulations	SLO WITH GRADE 3 STATE ELA ASSESSMENT	AND	SLO WITH GRADE 3 STATE MATH ASSESSMENT	SLO with one of the following assessment options: • State approved 3rd party** • District or BOCES – developed • School-wide, group, or team results based on State assessment • School or teacher-created	SLO with one of the following assessment options: • State approved 3rd party** • District or BOCES – developed • School-wide, group, or team results based on State assessment • School or teacher-created
3	District Decision	SLO WITH GRADE 3 STATE ELA ASSESSMENT	AND	SLO WITH GRADE 3 STATE MATH ASSESSMENT		
4	NYSED Regulations	STATE PROVIDED GROWTH: GRADE 4 STATE ELA ASSESSMENT	AND	STATE PROVIDED GROWTH: GRADE 4 STATE MATH ASSESSMENT	SLO with one of the following assessment options: • State approved 3rd party** • District or BOCES – developed • School-wide, group, or team results based on State assessment • School or teacher-created	SLO WITH GRADE 4 STATE SCIENCE ASSESSMENT
	District Decision	STATE PROVIDED GROWTH:		STATE PROVIDED GROWTH:		

Mapping District Decisions for Assessments

HIGH SCHOOL COURSES

SUBJECT	ELA	MATH	SOCIAL STUDIES	SCIENCE	FOREIGN LANGUAGE	PHYSICAL EDUCATION	
NYSED Regulations	<ul style="list-style-type: none"> If course ends in a Regent, SLO must use Regent (or Regent equivalents) (Note: if Regent is unavailable, but course ends in Regent, then must use State approved 3rd party assessment**) If course does not end in a Regent, SLO with one of the following assessment options: <ol style="list-style-type: none"> 1. State approved 3rd party** 2. District or BOCES–developed 3. School-wide, group, or team results based on state assessments 4. School or teacher-created 	<ul style="list-style-type: none"> If course ends in a Regent, SLO must use Regent (or Regent equivalents) (Note: if Regent is unavailable, but course ends in Regent, then must use State approved 3rd party assessment**) If course does not end in a Regent, SLO with one of the following assessment options: <ol style="list-style-type: none"> 1. State approved 3rd party** 2. District or BOCES–developed 3. School-wide, group, or team results based on state assessments 4. School or teacher-created 	<ul style="list-style-type: none"> If course ends in a Regent, SLO must use Regent (or Regent equivalents) (Note: if Regent is unavailable, but course ends in Regent, then must use State approved 3rd party assessment**) If course does not end in a Regent, SLO with one of the following options: <ol style="list-style-type: none"> 1. State approved 3rd party** 2. District or BOCES–developed 3. School-wide, group, or team results based on state assessments 4. School or teacher-created 	<ul style="list-style-type: none"> If course ends in a Regent, SLO must use Regent (or Regent equivalents) (Note: if Regent is unavailable, but course ends in Regent, then must use State approved 3rd party assessment**) If course does not end in a Regent, SLO with one of the following assessment options: <ol style="list-style-type: none"> 1. State approved 3rd party** 2. District or BOCES–developed 3. School-wide, group, or team results based on state assessments 4. School or teacher-created 	<ul style="list-style-type: none"> If course ends in a Regent, SLO must use Regent (or Regent equivalents) (Note: if Regent is unavailable, but course ends in Regent, then must use State approved 3rd party assessment**) If course does not end in a Regent, SLO with one of the following options: <ol style="list-style-type: none"> 1. State approved 3rd party** 2. District or BOCES–developed 3. School-wide, group, or team results based on state assessments 4. School or teacher-created 	<p>SLO with one of the following assessment options:</p> <ol style="list-style-type: none"> 1. State approved 3rd party** 2. District or BOCES–developed 3. School-wide, group, or team results based on state assessments 4. School or teacher-created 	<p>SLO with one assessment:</p> <ol style="list-style-type: none"> 1. State appr 2. District or 3. School-wic results base 4. School or t
Grade and District Decision							
Grade and District Decision							
Grade and District Decision							
Grade and District Decision							

Courses leading to Regents: Algebra, Geometry, Algebra 2/Trigonometry, Comprehensive English, Global History & Geography, U.S. History & Government, Chemistry, Earth Science, Physics, Living Environment

Questions

Email questions and requests for information at anytime to:

slohelp@mail.nysed.gov

Answers that IES has received from SLOHelp are posted on EngageErie2

engage2ccb.weebly.com